

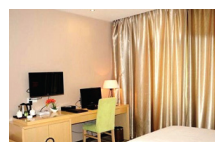
TINY PC



SX-MPC is a small and portative 1/12 case volume of traditional host and aluminun panel 4.5 thickness, follow aerodynamic principles, silent fanless radiator, high heat-dissipation, ventilation cooling system design, to make sure machine running well under normal temperature. Button with bionics texture design makes no finger prints left. Touch is as excellent as appearance.

APPLICATION FIELD

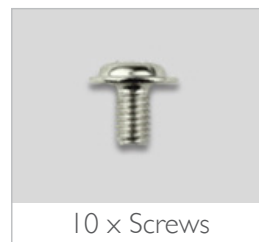
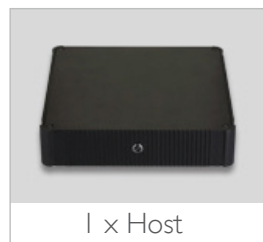
- **Point of sales for retail**
- Smart home
- Hotel room desktop computer
- Digital signs, E-box
- Self-service terminals
- Office computer



SPECIFICATIONS

Part Number	SX-MPC-N44
Size	200*44*200MM
MB	Mini ITX mainboard (Size:17cm*17cm)
CPU	Intel Celeron J1900 Quad Core
Audio	Realtek ALC662 HD Audio Controller
Graphic	5 Intel HD Graphics
Memory	1*DDR3L SO-DIMM sockets, support up to 8 GB
LAN	11 Realtek RTL8111E LAN chips
Rear I/O Port	1*DC_IN; 3*USB2.0; 1*RJ45; 1*VGA; 1*USB3.0; 1*HDMI; 1*HP_OUT; 1*MIC_IN; 4*COM
RAM	4GB\DDR3L\1600\tigo\1.35V
SSD	32G\M6225\BIWIN
Attachment	12V5A adaptor
Optional (additional cost)	1*USB3+3*USB2 update to 2*USB2+1*LAN wifi with antenna*2 (\$10) WIN 7 (professional version)
Msata SSD	8G\M62225\BIWIN • 16G\M6225\BIWIN • 32G\M6225\BIWIN 64G\M6225\BIWIN • 64G\M6226\BIWIN • 28G\M6223\BIWIN 256G\M6314\BIWIN • 256G\M6305\BIWIN
Memory	2GB\DDR3\1600\tigo\1.5V • 4GB\DDR3\1600\tigo\1.5V 8GB\DDR3\1600\tigo\1.5V • 2GB\DDR3L\1600\tigo\1.35V 4GB\DDR3L\1600\tigo\1.35V • 8GB\DDR3L\1600\tigo\1.35V
2.5" HDD (WD)	500GB\5400 R\8M\6GB\s\WD 1T\5400 R\8M\6GB\s\WD
Wifi Module	Intel 3160.HMVG

PACKAGE CONTENTS



CONNECTIONS

